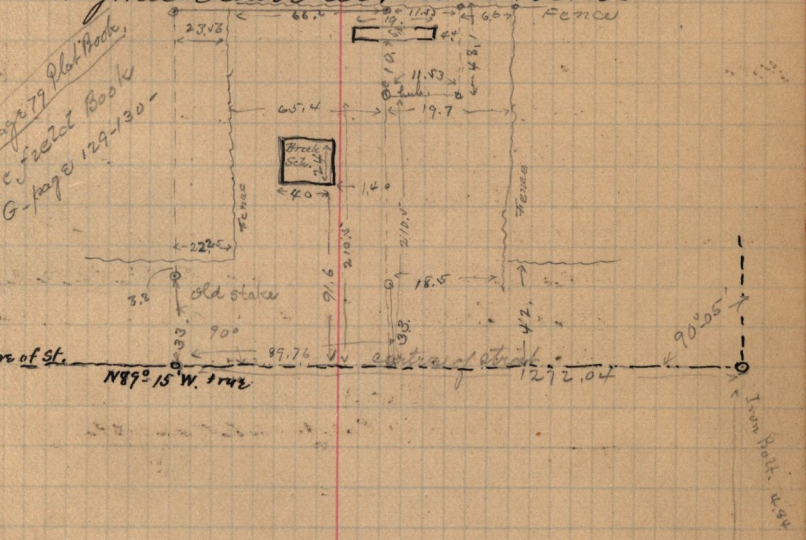


Jan'y - 17 - 1893

Copy of Abstract, of land conveyed to Victor Reno. Pt N.W. 1/4 Sec 17. T. 6. N. R. 1. W. Beg. 18.35 ch. N. 91.17 17.84 ch. W. of S. E. Cor. of said 1/4 Sec. Running N. 3.77 ch. W. 1.36 ch. S. 3.17 ch. E. 1.36 ch. to beg. being the Lyme School lot, at 5 Points

Page 79 Plat Book, of 222d Book G - page 129-130 -



S. E. Cor. of →
N. W. 1/4 Sec. 17. T. 6. N.